

Vacuum Pump System

Industrial Oil-sealed Vacuum Pumps and System



Industrial Dry Vacuum Pumps



90 EDWARDS
Years in Vacuum



ISO 9001:2008
FM 514390

Refrigeration Market

Potencial application

- Refrigeration compressor manufacturer
- Refrigerator / air conditioning manufacturer

Oil treatment system for degassing, dehydrating and filtering ester and mineral oils with nominal flow rate of 100 to 500 liters/hour.

The ester oils are 100 times more hygroscopic than a mineral oil. The Edwards equipment are designed to reduce the moisture from 300 ppm to below 15 ppm in only one pass.

Advantages of Edwards oil treatment plants

- Increase life and efficiency of refrigeration compressor
- Avoid freezing points inside RAC system.
- Automatic moisture controller in the equipment
- Automatic operation.

Technical Data

Models	100HCD	200HCD	200HCS	500HCS
Storage Tank	NOT INCLUDED	NOT INCLUDED	YES	YES
Moisture Controller - Panametrics	Optional			
Initial Oil Condition	200 - 300 ppm			
Outlet Single Pass Performance	5 - 15 ppm			
Throughput @ 60 Hz (l h ⁻¹)	100	200	200	500
High Vacuum Pumping Capacity (m ³ h ⁻¹)	280	480	480	1000
Ultimate Vacuum	2 x 10 ⁻³			
Filter Nominal Porosity	$\beta_{200} = 3\mu$			
Installed power (kW)	16	18	20	34
Approximate Dimensions	Width (mm)	1200	1200	1800
	Length (mm)	1800	1800	3000
	Height (mm)	1950	1950	1950
	Weight (kg) (without trailer)	700	850	1650



200HCS



800050



Trailer mounted

OIL TREATMENT PLANT

- Insulating
- Refrigeration Compressor
- Lubricating
- Synthetic
- Hydraulic
- Turbine
- Brake Fluids

EDWARDS

WWW.EDWARDSVACUUM.COM

EDWARDS
WWW.EDWARDSVACUUM.COM

Rua Bernardo Wrona, 222
02710-060 - São Paulo - SP
Brasil
Phone: + (55) 11 3952 5000
Fax: + (55) 11 3965 2766
e-mail: vendas@edwardsvacuum.com

INNOVATIVE PRODUCTS

GLOBAL STRENGTH

LOCAL SUPPORT

VACUUM EXPERTISE

Electricity Market

SS Oil Treatment plant and Transformer Drying System

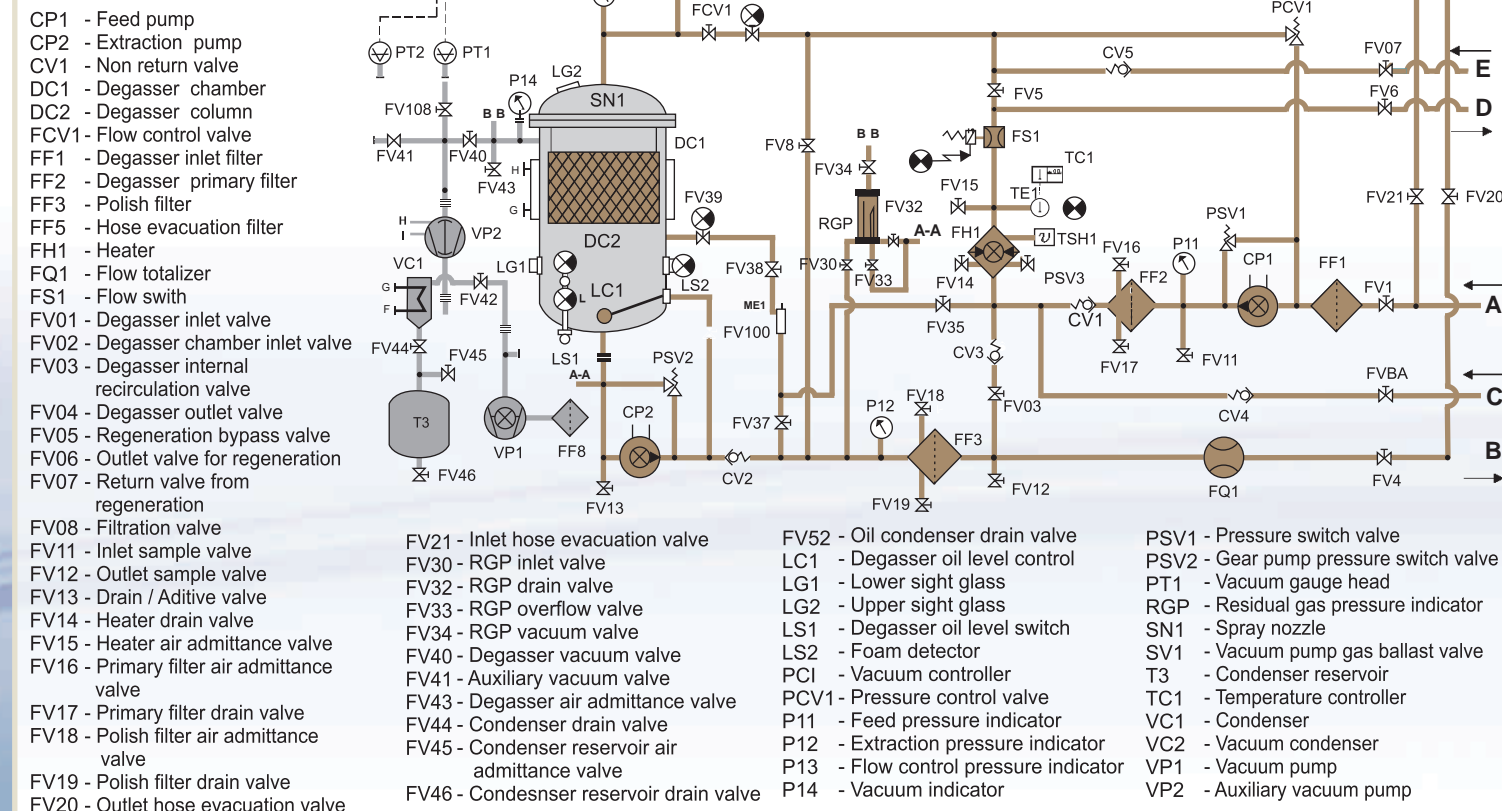
The SS range of oil treatment plant is designed to remove all contaminants including solid particulate, dissolved moisture and gases in a single pass through the plant. The plant can also treat the cores and windings of transformers by the recirculation of hot treated oil or hot oil spray system hence drying the transformer and thus improving its performance and life.



4000SS

Models	4000SS	6000SS	10.000SS
Throughput @ 60 Hz (l h ⁻¹)	4000	6000	10000
Heating capacity (equivalent to Δt of 40° C) (kW)	68	108	216
Temperature Control Range (°C)	0 - 120		
High Vacuum Pumping Capacity (m ³ h ⁻¹)	605	1435	3110
Ultimate Vacuum (mbar)	5 x 10 ⁻³		
Filter Porosity (micron)	0,5		
Electrical Supply (alternatives available to order)	380V, 60 Hz, 3 ∅		
Installed power (kW)	83	142	266
Approximate Dimensions	Width (mm)	1510	2115
	Length (mm)	2210	3570
	Height (mm)	2075	2350
	Weight (kg) (without trailer)	2170	3420
			4500

Flow Diagram



P.S.: Some of the items which are shown in the diagram are optional.

Speedy Oil Compact Unit

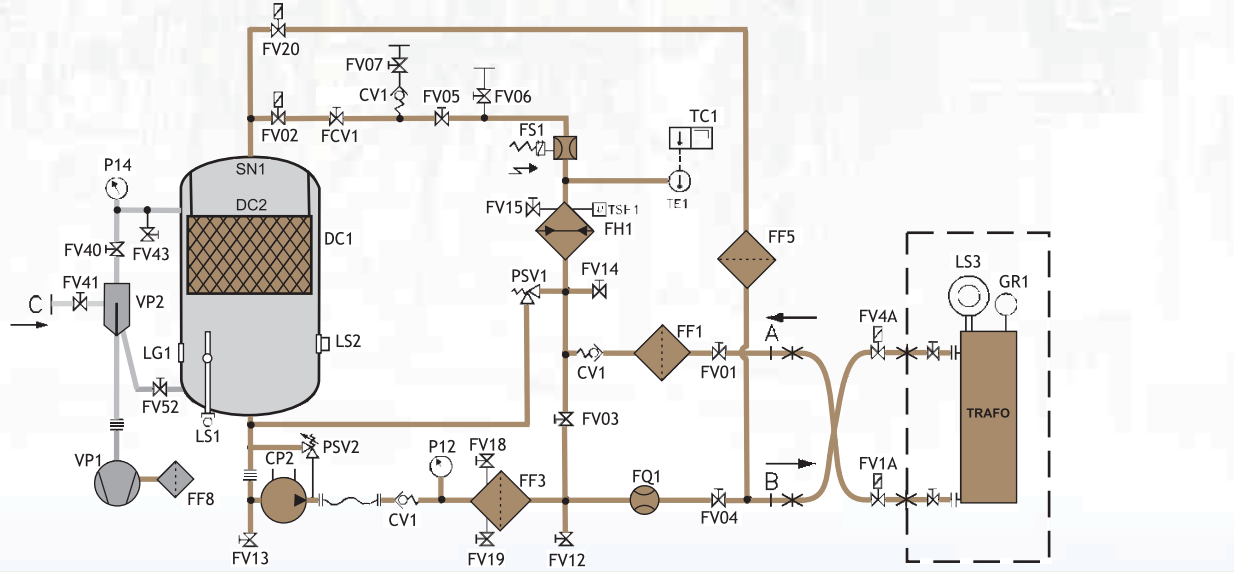
Compact oil treatment system for degassing, dehydrating and filtering insulating oil for transformers manufacturer and service companies. The standard plant comprises a heating system with low power dissipation, degasser chamber, inlet strainer, extraction pump, fine filter, vacuum pump and control panel. All process valves, interconnecting pipework, instrumentation and controls are included for normal plant operation.



2000SO

Models	500SO	1000SO	2000SO
Throughput @ 60 Hz (l h ⁻¹)	500	1000	2000
High Vacuum Pumping Capacity (m ³ h ⁻¹)	11,7	25	38,9
Ultimate Vacuum (mbar)	5 x 10 ⁻²		
Heating Capacity (kW)	7	14	28
Filter Porosity (micron)	0,5		
Electrical Supply (alternatives available to order)	380V, 60 Hz, 3 ∅		
Installed power (kW)	9	16	31
Approximate Dimensions	Width (mm)	1200	1200
	Length (mm)	900	900
	Height (mm)	1820	1820
	Weight (kg) (without trailer)	490	520
			600

Flow Diagram



P.S.: Some of the items which are shown in the diagram are optional.

Typical Features for Models SS and Speedy Oil

System Performance

The typical performance in a single pass through the system is:

Models	SS	Speedy Oil	Speedy Oil + Roots Pump
Water - From 50ppm	3	10	5
Gas - From 10%	0,1	0,5	0,3
Particles - Over 5 micrometers	99%		

Acidity: with the addition of optional fullers earth filters, complete with control valves for the reduction of acidity of oils from 0,3 to 0,05 mg KOH/g

Advantages

Automatic operation
 Excellent single pass performance
 Low heating density
 Electronic temperature controller
 Short start up times, typically less than 5 minutes
 Plant designed for long term unattended operation including failsafe and automatic restart controls
 Plants are designed for simple one man operation and maintenance

Note: Due to our policy of continuous development of our products we reserve the right to modify any of the information contained in this brochure.

Optional Accessories

Flow rate meter;
 Gas content measurement;
 Water Condensing system;
 Vacuum/oil hoses;
 Auxiliary circulation pump;
 Spray nozzle for hot oil spray transformer drying trailer for highway transport;
 Castor kit;
 System for oil treatment with the transformer in operation

Speedy Oil Ultimate Line

Key Features:

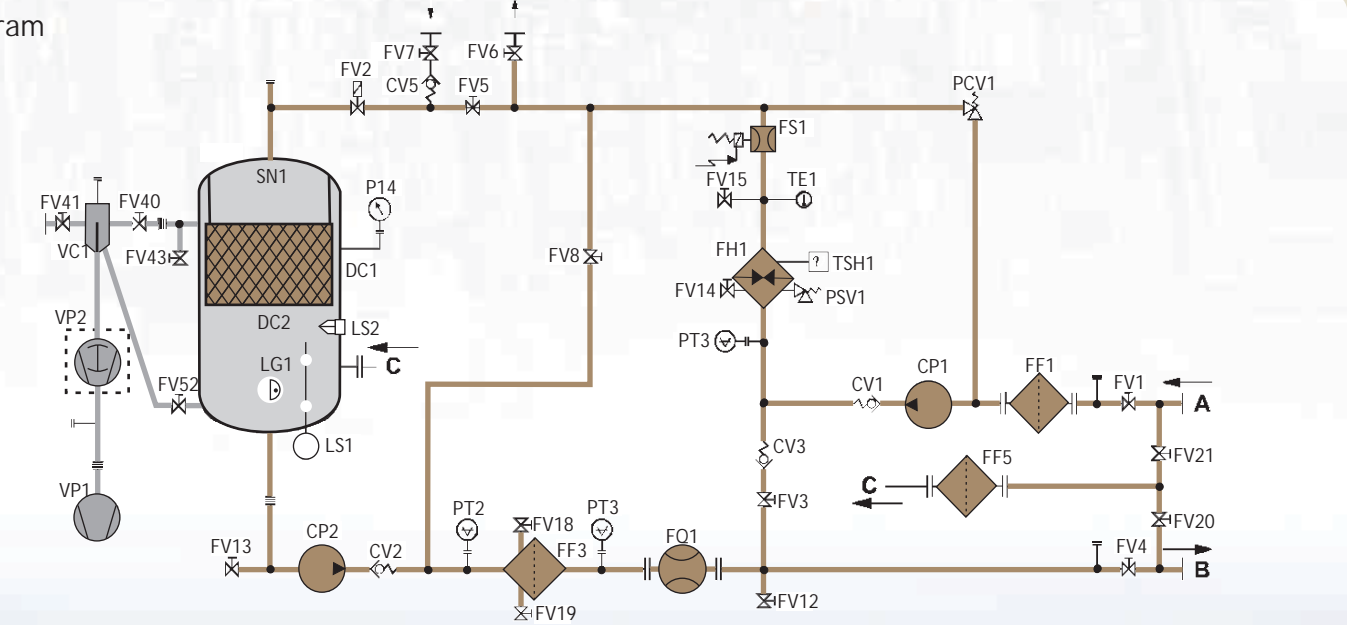
- Automatic Operation
- Variable Throughput
- Centrifugal Pumps (Lower noise/Non particle generation)
- Touch Screen HMI (optional)



4000SO

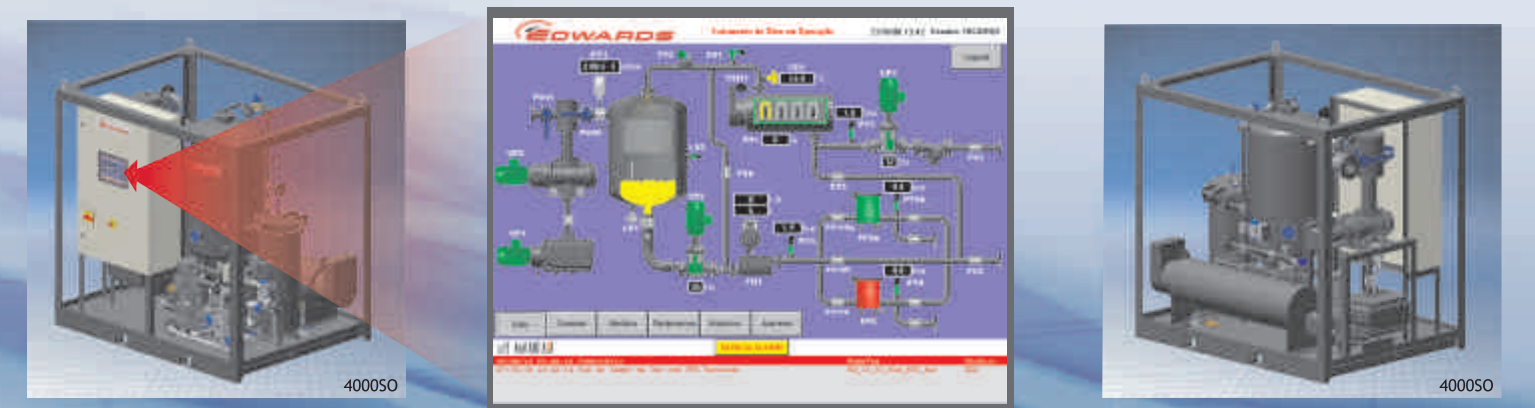
Models	4000SO	8000SO	12.000SO
Throughput @ 60 Hz (l h ⁻¹)	1000 - 4000	1500 - 8000	2500 - 12000
High Vacuum Pumping Capacity (m ³ h ⁻¹)	96/605	96/605/1040	192 / 1040/2210
Ultimate Vacuum (mbar)	5 x 10 ⁻²		
Heating Capacity (kW)	36	72	144
Filter Porosity (micron)	0,5		
Electrical Supply (alternatives available to order)	380V, 60 Hz, 3 ∅		
Installed power (kW)	47	90	184
Approximate Dimensions	Width (mm)	1450	1900
	Length (mm)	1950	2700
	Height (mm)	1900	2200
	Weight (kg) (without trailer)	1330	2240
			3500

Flow Diagram



P.S.: Some of the items which are shown in the diagram are optional.

Touch Screen detail of HMI



4000SO

4000SO